

Hendrick Airburst Cleaning System

Manage the effectiveness and reduce maintenance costs of the intake screen with an Airburst Cleaning System.

Hendrick recommends an Airburst cleaning system to assure trouble-free, uninterrupted operations in high debris environments or where inadequate water currents can cause a buildup of sediments and organic matter on the intake screen and gradually restrict water flow. The Airburst cleaning system effectively removes the debris through a rapid release of high-pressure air.

System Components and Options

<p>Air Compressor* <i>Recharges compressed air in the receivers</i></p>	<p>Options: Reciprocating or rotary screw, oil-less or food grade oil, 1/2hp to 125hp motor, electric or gas motor, ODP or TEFC motors, oil and water filters, silencers and more.</p>
<p>Receivers* <i>ASME coded high-pressure vessels</i></p>	<p>Options: Custom sizes with horizontal or vertical installation, outlets made to valve size, plus other adaptable features to meet specific requirements with indoor or outdoor installation.</p>
<p>Valves* <i>Automatic or Manual Operations</i></p>	<p>Sizes range from 1" ball valves to 12" butterfly valves that can be automated or manually operated. Pneumatically operated valves provide a low maintenance and cost effective solution.</p>
<p>Control Panel <i>Custom designed and built to specifications by a UL 508A panel shop</i></p>	<p>Automated systems provide the optimal cleaning solution at programmed intervals while offering manual initiation of a backwash at any time. Options to meet NEMA standards, alarms and signals to/from SCADA. Manually operated valve systems are also available.</p>
<p>Differential Level Bubbler System <i>Optional system to determine head loss or control intake pumps</i></p>	<p>Adds value to a Backwash system by measuring the head loss or pressure drop across the intake screen(s) to initiate a backwash. Can also be used to control intake pumps. Bubblers are time tested and proven to be one of the most reliable and lowest maintenance level measurement system available.</p>
<p>Start-up and Training</p>	<p>Start-up and training can be provided at your site. 24/7 phone support is provided at no additional cost.</p>

* Sized to match screen requirements.



Standard components of a turn-key Airburst system: 1) Air compressor, 2) Control panel, 3) Valves and 4) Receiver.

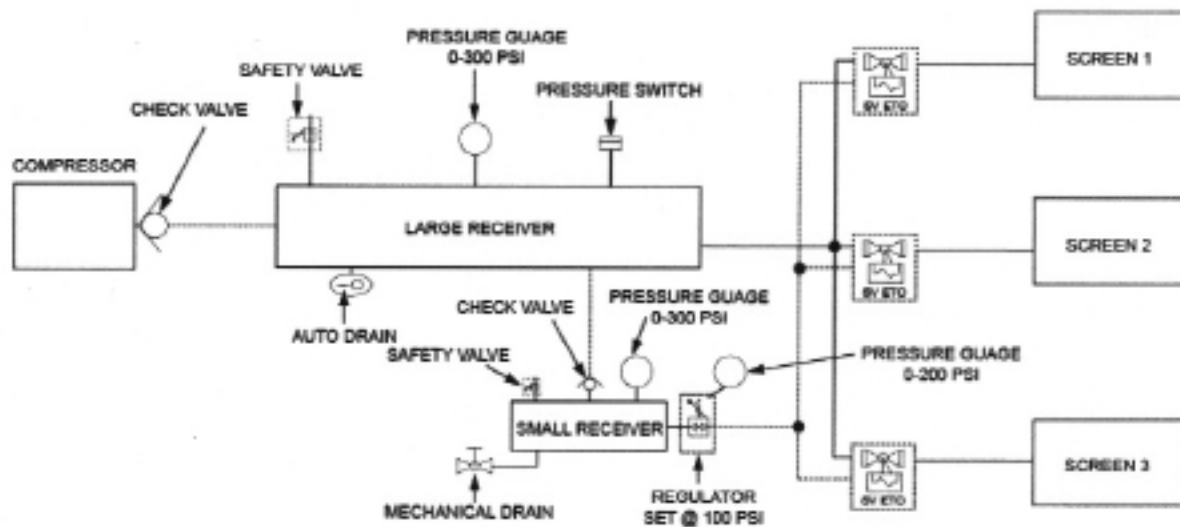


Airburst system can be delivered with an optional outdoor enclosure.

Hendrick offers multiple intake screen options including T-intakes, half intakes, drum screens, and flat panels. Our screens are 316(b) compliant & approved by NMFS. Contact our engineering group to learn more about our intake screens and Airburst system.



Airburst Piping & Instrumentation Diagram



Need a quote? Complete the quote request form below and email it to Hendrick's sales team.

Installation Orientation: Vertical Horizontal

Compressor(s) Location: Indoor Outdoor Voltage: _____

Panel Type: NEMA 4 NEMA 4X Other: _____

Control Panel
(Standard Options)

- | | |
|---|--|
| <input type="checkbox"/> Timed cycle start | <input type="checkbox"/> IEC start & overload relay |
| <input type="checkbox"/> Dry contact backwash warning | <input type="checkbox"/> Remote start for each valve |
| <input type="checkbox"/> Compressor hour meter | <input type="checkbox"/> Compressor fault |
| <input type="checkbox"/> Cycle in progress | <input type="checkbox"/> Motor circuit protectors / compressor |
| <input type="checkbox"/> Adequate pressure | |

A wide selection of control panel options are available. If you have additional requirements, please provide details below.

Additional Requirements: _____

Name _____

Company _____

Contact Information Phone: _____ Email: _____

Project Please describe: _____

1 Complete the form and 2 click send. A Hendrick sales person will follow up with you.

Send

